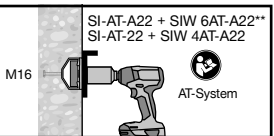
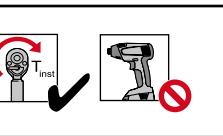
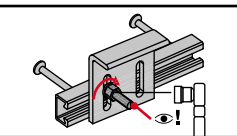
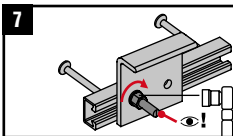
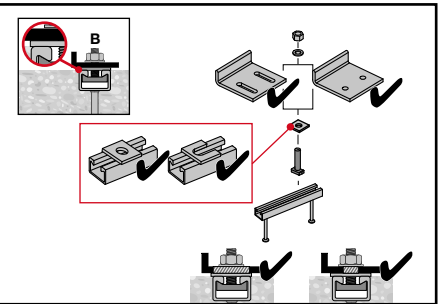
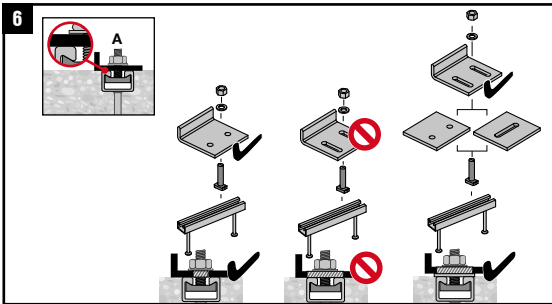
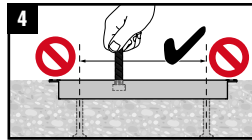
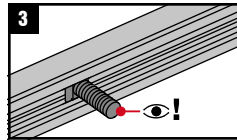
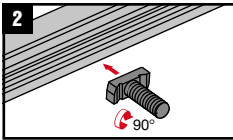
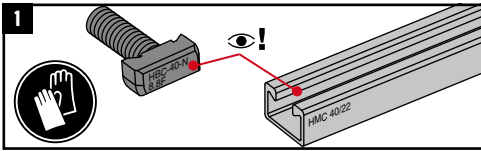


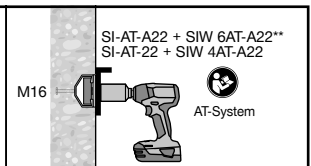
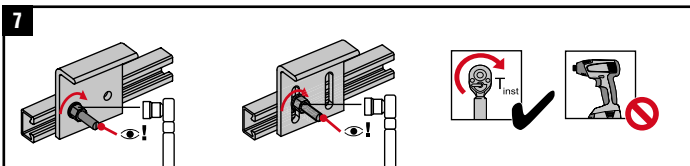
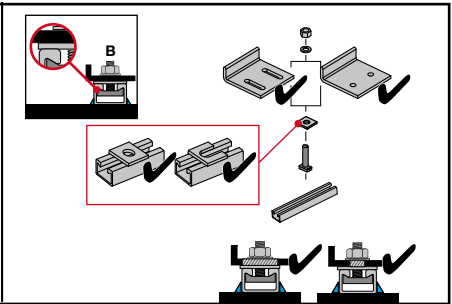
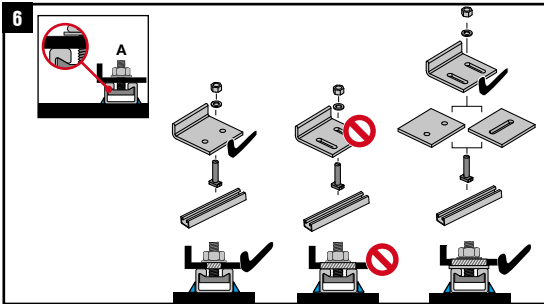
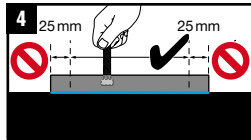
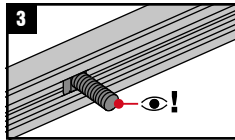
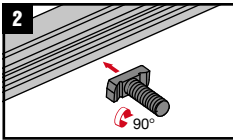
HBC-40/22-N	HAC-C 40/22, HAC-C-P 40/22, HAC-C-P 40L
HBC-50/30-N	HAC-C 50/30, HAC-C-P 50/30, HAC-C-P 50L, HAC-C 52/34



Anchor Channel	Channel Bolt	T_{inst} [Nm]	
HAC-C-P 40/22	HBC-40/22-N M16	8.8	8.8
HAC-C-P 40L		160	160
HAC-C 40/22		60	160
HAC-C-P 50/30	HBC-50/30-N M16	185	185
HAC-C-P 50L		320	320
HAC-C 50/30		320	320
HAC-C 52/34	HBC-50/30-N M20	320	320
HAC-C-P 50/30		320	320
HAC-C-P 50L		320	320
HAC-C 50/30			
HAC-C 52/34			



HBC-40/22-N	HMC 40/22
HBC-50/30-N	HMC 50/30, HMC 52/34



Mounting Channel	Channel Bolt	T_{inst} [Nm]	
		8.8	
HMC 40/22	HBC-40/22-N M16	160	
HMC 50/30, HMC 52/34	HBC-50/30-N M16	185	
HMC 50/30, HMC 52/34	HBC-50/30-N M20	320	